



MODERN CHESS

ISSUE 16

MAGAZINE

Typical Attacking Ideas

Learn How to Use the
Dangerous f-Pawn

You Don't Know?

So, Dig Deeper!

Part 2



Master the French
Structures

Benoni Structures:
Methods of Playing

Endgame Series 16

CONTENTS

3 Master the French Structures (IM Renier Castellanos)

- 3 Oll,Lembit (2610) - Muhutdinov,Marat (2485) / Moscow PCA-Intel qual (9) 1995
- 5 Kasparov,Garry (2815) - Short,Nigel (2665) / D London rapid m (3) 1993
- 6 Korneev,Oleg (2619) - Giaccio,Alfredo Gustavo (2505) / Orense op 9th (6) 13.07.2000
- 8 Hebden,Mark (2505) - Sutovsky,Emil (2609) / Monarch Assurance 09th (3) 16.10.2000
- 10 Bartel,Mat (2646) - Anton Guijarro,D (2630) / 42nd Olympiad 2016 (11.10) 13.09.2016
- 11 Castellanos Rodriguez,Renier (2487) - Michna,Christian (2248) / IV Open internacional LLucmajor 2015
- 13 Castellanos,R (2504) Barbero,A (2345) / Open Balaguer 2013 (5) 19.07.2013
- 14 Castellanos,Renier (2486) - Hamilton,Robert (2309) / Carnival Quebec (3) 25.02.2012
- 16 Castellanos,Renier (2486) - Sambuev,Bator (2555) / Montreal 2010 (4)
- 21 Khamrakulov,Ibragim S (2545) - Suba,Mihai (2537) / La Roda op 34th (5) 06.04.2007
- 22 Petrosian,Tigran - L Toufighi,Homayoon / Dubai op 9th (5) 2007

24 Endgame Series 16 - Strategies in Endgames with Same - Colored Bishops (GM Davorin Kuljasevic)

- 24 Sveshnikov,Evgeny (2545) - Kasparov,Garry (2545) / URS-ch47 Minsk (2) 12.1979
- 29 Paichadze,L (2556) - Kasimdzhanov,R (2712) / Nakhchivan Open 2015 (9.5) 10.05.2015
- 35 Rezan,S (2423) - Kozul,Z (2602) / Zadar Open A 2015 (2.4) 14.12.2015
- 40 Vidit,Santosh Gujrathi (2644) - Karavade,Eesha (2379) / Qatar Masters op (7) 27.12.2015
- 42 Ehlvest,Jaen (2587) - Christiansen,Larry Mark (2544) / New York Generation (5) 28.04.2003

47 Typical Attacking Ideas - Learn How to Use the Dangerous f-Pawn (GM Nikolai Ninov)

- 47 Jakobsen,Ole (2440) - Csom,Istvan (2500) / Politiken Cup GM (8) 1983
- 48 Naiditsch,Arkadij (2654) - Gustafsson,Jan (2588) / EU-ch 8th Dresden (8) 11.04.2007
- 49 Carlsen,M (2822) - Bu Xiangzhi (2710) / FIDE World Cup 2017 (3.1) 09.09.2017
- 51 Aronian,L (2780) - Rapport,R (2702) / 79th Tata Steel GpA (10.3) 25.01.2017
- 55 Ziska,H (2545) - Radjabov,T (2742) / FIDE World Cup 2017 (1.2) 04.09.2017
- 58 Test 1 - 5

61 You don't know? So dig deeper! - Part 2 (GM John van der Wiel)

- 61 Introduction
- 62 EXERCISE 1 - 6

70 Methods of Playing in Benoni Structures (GM Mihail Marin)

- 70 Rodshtein,Maxim (2623) - Gashimov,Vugar (2740) / EU-Cup 25th Ohrid (5.2) 08.10.2009
- 71 Hernandez Onna,Roman (2370) - Velimirovic,Dragoljub (2490) Capablanca Memorial (1) 1971
- 72 Beliavsky,Alexander G (2630) - Portisch,Lajos (2615) / Szirak Interzonal (14) 1987
- 74 Adamski,Jan - Matulovic,Milan (2525) / Lugano ol (Men) qual-C (2) 19.10.1968
- 76 Furman,Semen Abramovich - Khasin,Abram / URS-ch sf Kiev (14) 1957
- 77 Cuellar Gacharna,Miguel - Fischer,Robert James / Sousse Interzonal+ (4) 1967
- 78 Spraggett,Kevin (2545) - Marin,Mihail (2525) / Paris-ch op 1992
- 78 Furman,Semen Abramovich - Podgaets,Mikhail / Gori 1971
- 79 Straka,Josef Jr (2360) - Abbasov,Amil Habil Oglu (2209) / EU-ch U18 Prague (9) 25.08.2012
- 80 Csom,Istvan (2505) - Sax,Gyula (2575) / HUN-ch Hungary (9) 1984

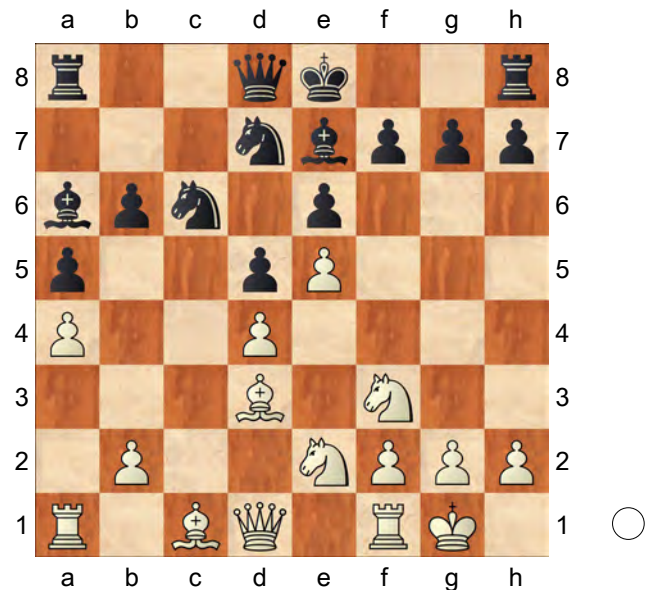
Master the French Structures



This article is a follow-up to my theoretical database on the French with 3.Nd2. In the following games you will find how to play in different scenarios that could arise from this line. Games 1–9 deal with the blocked center structure, d4–e5 vs d5–e6. Sometimes with the inclusion of pawns on a4 and a5 and sometimes without these. I also added a few commented games of my own where all the ideas are put into practice. For example the game against Grandmaster Sambuev shows two important plans: one, you must open a front of attack on the queenside with b3 and two the h4–h5 push followed by Nh2–Ng4, a recurrent idea. In the last two games, I add two games that made a good impression on me, especially Khamrakulov-Suba 2007 since it was played just a few meters away from my table. I was very impressed by white's attack against one of the greatest

defenders I have ever met. So simple and yet, lethal. I hope you enjoy these games and they serve you as a complementary material to the repertoire Database.

□	Oll,Lembit	2610
■	Muhutdinov,Marat	2485
	Moscow PCA–Intel qual (9)	1995



In this position Black has just played Ba6 "solving" the problem of his French bishop. Now, what should White do here? There are two options, keep the light square bishop or allow the trade and play on the weakened light squares. Lembit Oll chose the second one which seems to be more effective **12.Bb5!?**

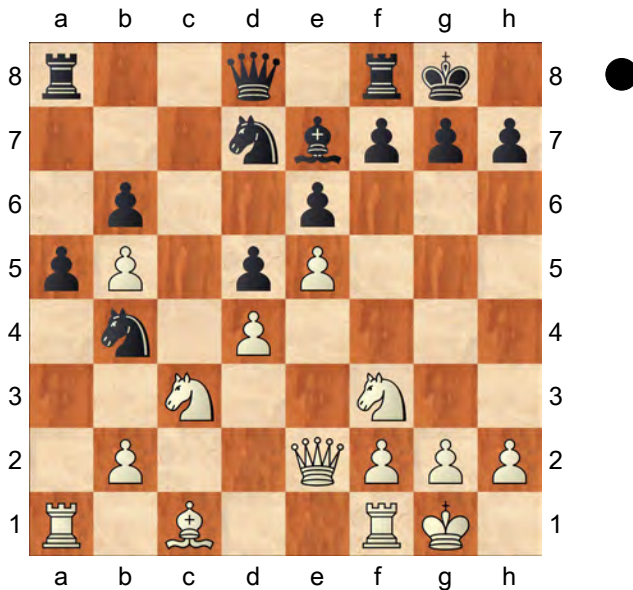
[12.Bb1!? is also possible. These positions are double-edged. White keeps his bishop but also allows Black to have an active piece on a6. The plan for White would be Re1–Ng3 and attack on the kingside meanwhile Black would keep his king in the center and start counterplay on the queenside by

means of b6–b5 and Nb6]

[12.Bxa6 is a third possibility here
Rxa6 13.Nc3 0–0 14.Nb5 Ra8 White
is slightly better in any case]

12...Bxb5 13.axb5 Nb4 One of the
particularities of this structure is that the
black knights do not have useful
squares. The knight on d7 is a
spectator and the knight on b4 is hitting
on empty squares. White can live with
this and use his space advantage

14.Nc3 0–0 15.Qe2



If you have read my theoretical article on
the French defense, you would recognize
this setup from Michael Adams games.
The idea to consolidate the queenside,
Bd2–Rc1–Na4 and then start action on
the kingside for example with h4 **Rc8**

16.g3 Preparing h4 but this is careless
[16.Bd2 Qc7 17.b3 is the right way
to go!]

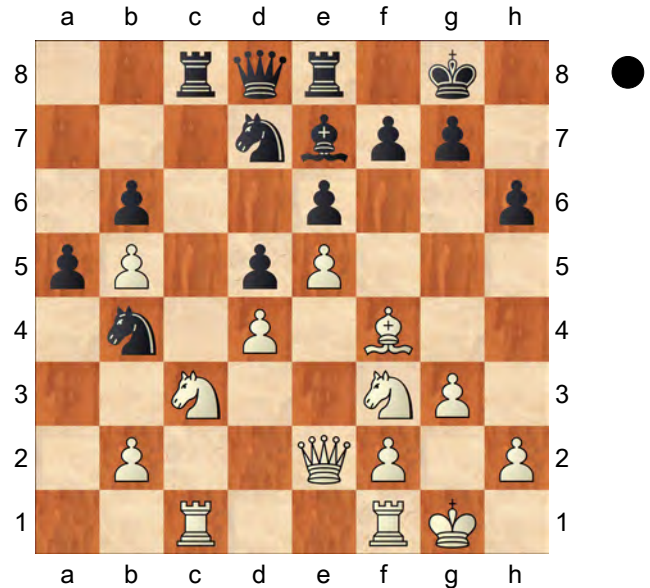
16...h6?! What's the idea of this move?
Black wants to rule out a plan like h4–Bg5
trading White's "bad" bishop for the good
one on e7 so he plays this move.
However, this not correct here.

[16...Qc7! and White does not have
a good way to meet Qc4 on the next
move]

17.Bf4 Re8

[17...Qc7 is now met with 18.Rfd1
Qc4 19.Qd2 and White has a
dangerous initiative here]

18.Rac1



f5? This move only helps White but it's
hard to suggest anything at all. Black
should have just waited

[18...Rc7 with the idea of Qa8
followed by Rec8 19.Bd2 Qa8
20.Ne1 Rec8 21.f4 and White is
just much better once f5 comes in]

19.exf6 Bxf6 20.Na4± Qe7 21.Bc7
[21.Rc3!]

21...Na2 22.Rc6 Nb4 23.Bd6 Qf7
24.Bxb4 axb4 25.Re1 Black is full of
weaknesses. **Rxc6 26.bxc6 Nb8**

27.Rc1

[27.Qb5! Rf8 (27...Rc8 28.Nxb6
Rxc6 29.Nxd5 the knight hangs on
b8) 28.c7 Qxc7 29.Rxe6 Qf7
30.Re2!±]



27...Rc8 28.c7 Rxc7 29.Rxc7 Qxc7
30.Qxe6+ Qf7?
[30...Kf8 was more stubborn 31.Nxb6
Qc6 32.Qxc6 Nxc6 33.Nxd5 Nxd4
and some chances to make a draw]
31.Qxb6+- Qe8 32.Qxb4 Kh7 33.Nc3
Nc6 34.Qb5 Qh5 35.Qxc6 Qxf3
36.Qxd5 Qxd5 37.Nxd5 Bxd4 38.b3
Kg6 39.Kf1 Kf5
1-0